

THE WORLD'S FASTEST AUTOMATED CELL COUNTER

LESS THAN 1 SEC!

EVE™ PLUS



EVE™ PLUS, Automated cell counter, with states-of-the-art optics provides image analysis for cell counting. The EVE™ PLUS is a benchtop size counter, designed to measure live, dead, and total counting, which gives us capability for viability with accuracy.

Key features and benefits

FAST

- Count less than 1 second

EASY

- Trypan blue staining method
- Auto focus, Manual focus
- Monitor to view the cell images
- Not required maintenance
- Small and compact (benchtop size)

ACCURATE

- Automated image analysis
- Count aggregated cell
- Cell size gating function (select range of cell size)
- Applicable for broad range of cell sizes and types

Convenient for use

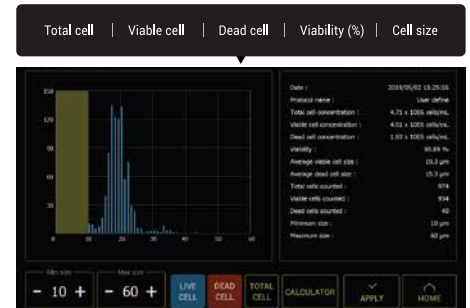
STEP 01. Load the sample



STEP 02. Adjust the focus

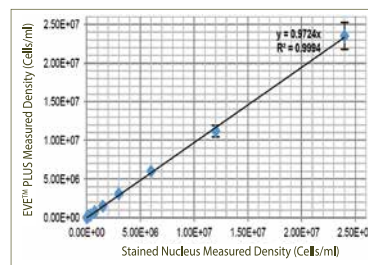
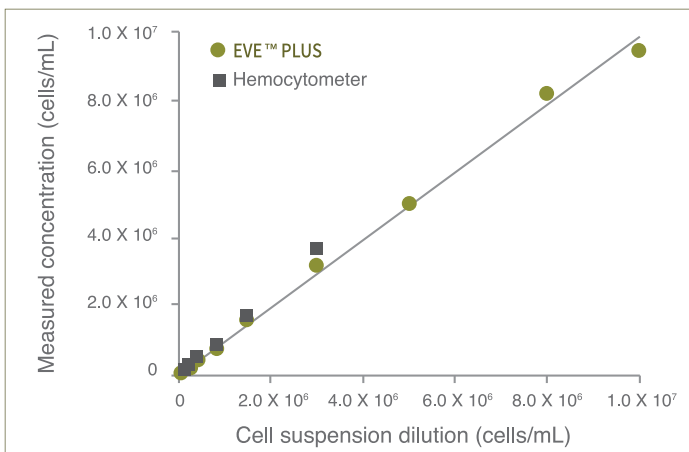


STEP 03. Get the results



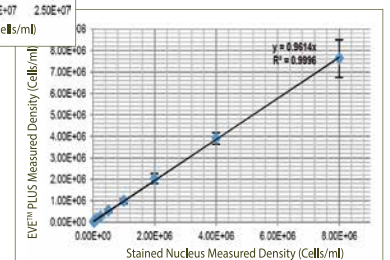
Results of Accuracy test

Measuring from the EVE™ PLUS extends further the high concentration range than hemocytometer readings



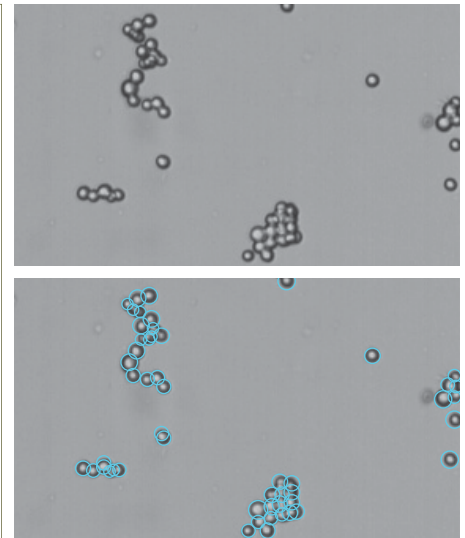
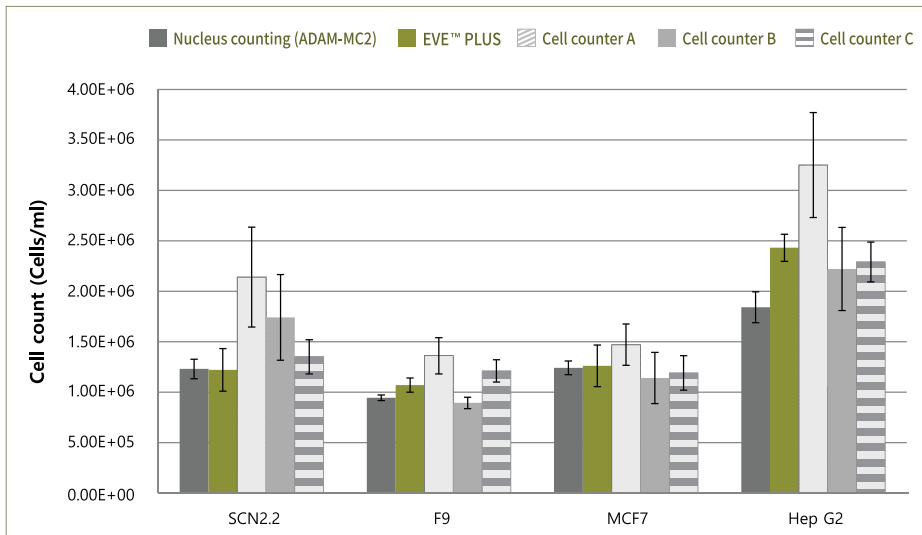
◀ Single cell

Clumped cell ▶



The World's Fastest Automated Cell Counter

Results of Correlation test (Clumped cell)



Clumped cells were counted with EVE™ PLUS, nucleus counting, and the automated cell counters A, B, C. NanoEnTek's ADAM-MC2 device was used for nucleus counting. It is accurate in clumped cells by counting the stained nuclei through the PI staining method. EVE™ PLUS is comparable to the nucleus counting for all cell lines with accuracy and precision. The other automated cell counters A, B, and C were shown inaccurate numbers in the clumped cell. EVE™ PLUS identifies and counts the individual cells within the clumpy cells for accurate analysis.

Cell lines validated on EVE™ PLUS

| Cell Type | Animal | Organ | Growth Properties |
|-----------|--------|-----------------|-------------------|
| HeLa | Human | Skin | Adherent |
| NIH-3T3 | Mouse | Embryo | Adherent |
| U-2 OS | Human | Bone | Adherent |
| Jurkat | Human | Blood | Suspension |
| KG-1 | Human | Blood | Suspension |
| HepG2 | Human | Liver | Adherent |
| Hep3B | Human | Liver | Adherent |
| LNCaP | Human | Prostate | Adherent |
| SH-SY5Y | Human | Brain | Adherent |
| SCN2.2 | Rat | Brain | Adherent |
| F9 | Mouse | Embryo | Adherent |
| MCF7 | Human | Breast | Adherent |
| A549 | Human | Lung | Adherent |
| GH3 | Rat | Pituitary gland | Adherent |

Specifications

| Item | Description |
|-----------------------------------|---|
| Counting time | <1 sec (Manual focus) <10 sec (Auto focus) |
| Cell measurement range (cells/mL) | 1 x10 ⁴ - 2x10 ⁷ |
| Cell size range | 5 - 60 μm |
| Sample volume | 10μL |
| Staining Method | Trypan blue stain |
| Display | Tablet PC |
| Exporter formats | JPEG(image), CSV(raw data), PDF |
| Data export | USB drive, Wifi |
| Dimensions | 27.4(w) x 23.3(d) x 27.4(h) cm |
| Weight | 4 kg |
| Technical support | provide remote assistance |

Ordering information

| Cat. No. | Description | Contents |
|----------|---|--|
| EVE-MC2 | EVE™ PLUS, Automated cell counter | Main device, Power supply, USB Wifi dongle, EVE™ Cell counting slide (50 slides) |
| EVS-050 | EVE™ Cell counting slide | 50 slides (100 counts) |
| EVS-1000 | EVE™ Cell counting slide | 1,000 slides (2,000 counts) |
| EBB-001 | Test beads Concentration (avg.) 1.0 x 10 ⁶ | 1mL |

EVE™ PLUS



NanoEntek, Inc.
851-14, Seohae-ro, Paltan-myeon, Hwaseong-si, Gyeonggi-do,
18531, Korea Tel : +82-2-6220-7940 / Fax : +82-2-6220-7999

NanoEntek America, Inc.
220 Bear Hill Road, Suite 102, Waltham, MA 02451, USA
Tel : +1-781-472-2558 / Fax : +1-781-790-5649

[website](http://www.nanoentek.com) www.nanoentek.com
[e-mail](mailto:sales@nanoentek.com) sales@nanoentek.com

FOR RESEARCH USE ONLY.
This product is not approved for diagnostic or therapeutic use.