

E-1000 Series



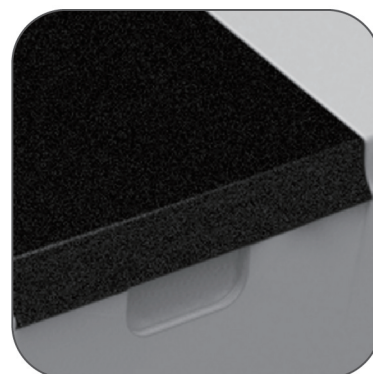
Introduction

- ♦ Smooth appearance design
- ♦ Ingenious color assortment
- ♦ White backlit LCD screen
- ♦ Oval buttons
- ♦ Easy parameter setting and microprocessor make the operation more convenient

Main Features

- 70*40 mm backlit LCD screen can show complete parameters like T,A,C,K.
- Calibrate 0%A and 100%T automatically.
- Large sample compartment can hold various cells from 5mm to 100mm and meet different test requirements.
- RS232 output port and professional analysis software UV-PRO1.0 with the functions of quantitative analysis.
- Automatic lamp switches and manual wavelength setting.
- Save and read out the test data and values of K and B.

E-1000 Series



Specifications

MODEL	E-1000V	E-1000UV
Display	70*40mm backlit LCD	
Wavelength Range	320 - 1020nm	190 - 1020nm
Slit Width	4nm	
Wavelength Accuracy	±2nm	
Wavelength Repeatability	≤1nm	
Photometric Accuracy	0.5%T	
Photometric Repeatability	0.2%T	
Stray Light	≤0.15%T@360nm	
Stability	0.002A@500nm	
Output Port	RS232	
Light Source	Tungsten Halogen Lamp	Tungsten Halogen/Deuterium Lamp
Power Requirements	110-220V, 50-60Hz	
Photometric Range	0-200%T, -0.3-3A, 0-9999C(0-9999F)	
Shipping Dimensions And Weight	530*460*320mm, 9 kg	