



# FiberMINI® AF

## 產品介紹

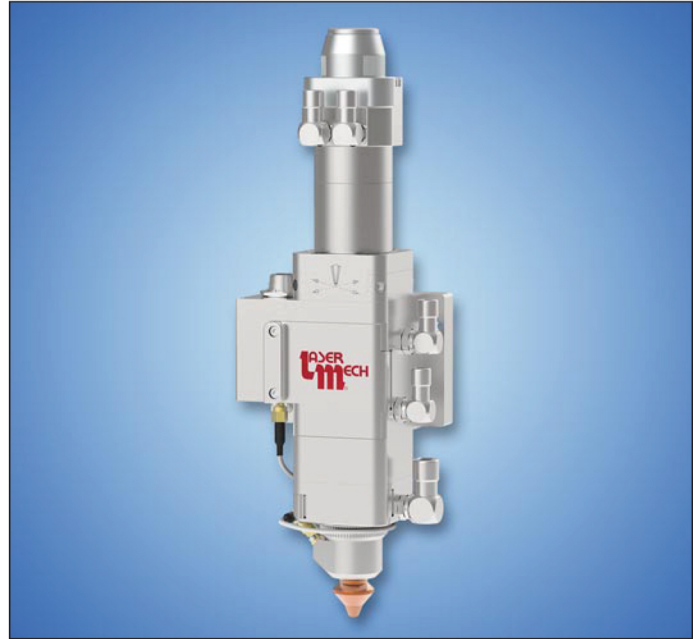
自動可編程焦點，專為厚薄金屬平板件設計；極具吸引力的價格，提供客戶友好的操作與可靠的性能。

## 應用範圍

衛浴五金件、家具金屬架  
園藝刀具、車用配件、電器材料

## 產品特色

- 內建式電容高度傳感器 ( HSU )
- 可選配同軸影像及同軸光源
- 多種噴嘴可選用，提供更多元的加工噴射氣流，達到理想的工藝呈現
- 聚焦鏡與保護鏡有內建式溫度監控系統，保護光學零件鏡頭避免過熱
- 聚焦位置有14mm，調整範圍適用於厚、薄板
- 快拆式保護鏡座，方便鏡片更換及擦拭
- 透過冷凝型噴嘴產生流順及準確的切割氣體
- 內建空氣吹掃流道，可維護光學元件的潔淨度
- 選配吹氣功能



Laser Mechanisms' ultra-compact FiberMINI® AF easily integrates into modern, three-axis laser cutting machine designs.

## Specifications

### CUTTING HEAD

Power Rating	up to 4 kW
Nominal Focusing Lens (Singlet, Fused Silica, $\lambda$ 1025-1080 nm)	100 mm, 125 mm, 150 mm, 200 mm
Clear Aperture	25 mm
Nozzle Orifices	1 mm to 4 mm
Nozzle Styles	Single Orifice, Double, Multi-Hole Shower, Custom
Assist Gas Pressure	up to 20 BAR
Focal Point To Nozzle Adjustment	-10 mm to +5 mm
Weight	~1.5 kg

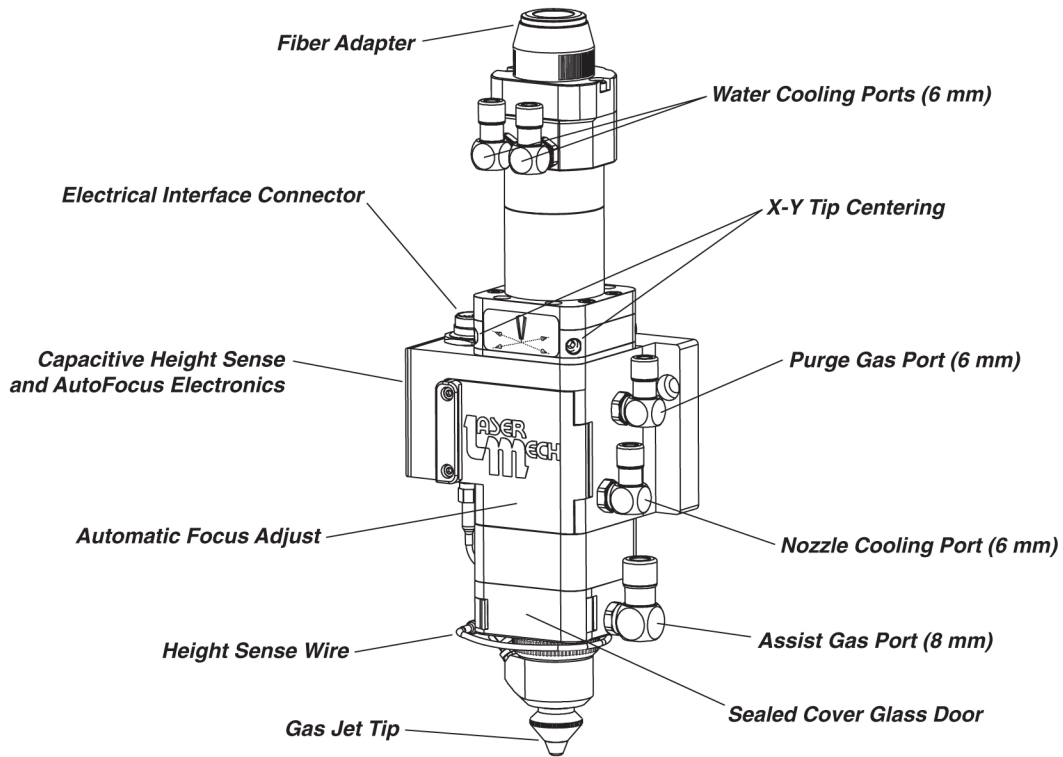
### LASER MECH® COLLIMATOR

Nominal Collimating Lens (Doublet, Fused Silica, $\lambda$ 1025-1080 nm)	35 mm, 60 mm, 75 mm, 100 mm
Clear Aperture	25 mm
Fiber Connection (Others Available On Request)	QBH (HLC-8), QD (LLK-D), LLK-B, PIPA-Q

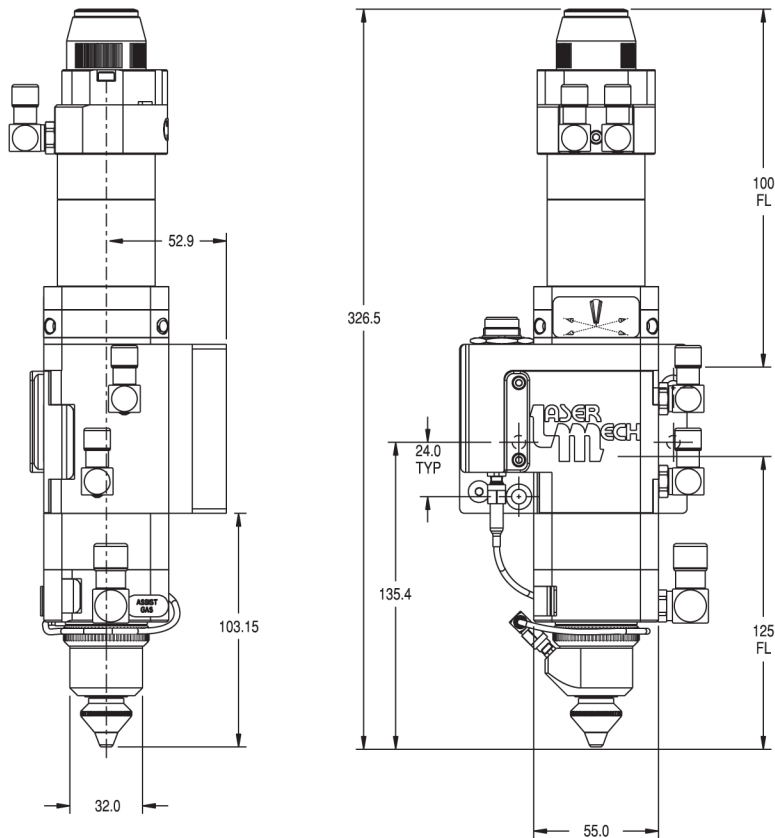
### HEIGHT SENSOR

Standoff Distance Range (1 mm Recommended)	0.2 mm to 8.0 mm
Calibration	Auto Calibrating
Response Time	<1 msec.
Temperature Stability	$\pm 5\%$ of Standoff Setting, 0° to 45° C
Power Requirement	24 V
Output (Optimized Curve For Flat Metal or Linear Signal)	0-10 V Analog

Specifications subject to change without notice.



*FiberMINI® AF shown with 100 mm collimator and 125 mm focal length. Other configurations available upon request.*



長豐光學科技股份有限公司 Laser Mechanisms Taiwan Ltd.

www.lasermech.com.tw

TEL: +886-2-2881-3678 FAX: +886-2-28813578

13F., No. 192-1, Sec. 4, Chengde Rd., Shilin Dist., Taipei City 111052, Taiwan

111052 台北市士林區承德路四段192-1號13樓